

# NEWSLETTER

## We're Making a Better Banking Experience for You!



### Mobility App

Our new app prioritizes security while increasing usability and convenience.



### Bill Pay

The new system features easier navigation and more control PLUS use bill pay from our new mobile app.



### Credit Sense

A comprehensive program that helps track your credit score, monitor your credit report and so much more!



### Online Banking Portal

Get a snapshot of all the things that matter most all on one page.



### New Online Banking Feature

Conveniently open additional account online.

## Looking for Experienced Investment Advice?

Ask Award Winning CFS\* Financial Advisor



### Kristin Chim

**She's done it again!**

Kristin does so much for our members that CUSO Financial Services, L.P. has awarded her with the **2018 Gold National Keystone Award\*\***. That makes it her seventh consecutive Keystone award!

**Kristin provides knowledgeable guidance on investment services that fit your unique needs.**

Retirement Planning, Wealth Management, College Savings, 401(k) Rollovers, Life Insurance, and More.

**Start planning for tomorrow, today! Contact Kristin at 952-445-0888 to schedule your consultation.**

\*Non-deposit investment products and services are offered through CUSO Financial Services, L.P. ("CFS"), and Sorrento Pacific Financial, LLC ("SPF"), registered broker-dealers (Members FINRA www.finra.org /SIPC www.sipc.org) and SEC Registered Investment Advisors. Products offered through CFS/SPF: are not federally insured, are not guarantees or obligations of credit unions or banks, and may involve investment risk including possible loss of principal. Credit unions and banks contract with CFS/SPF to make non-deposit investment products and services available to credit union members or bank clients.

\*\*The Keystone Award recognizes programs having the highest ratio of revenue per \$1 million of total deposits

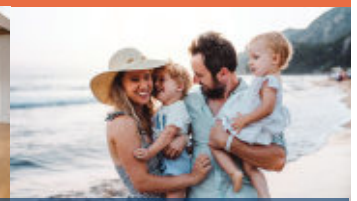
## Dream Big with a Home Equity Loan from South Metro FCU

MAKE IT HAPPEN WITH RATES AS LOW AS

**2.99% APR\*** see website or lender for details



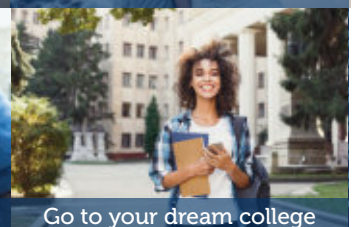
Build your dream kitchen



Take that dream vacation



Get your dream car



Go to your dream college



"To improve is to change; to be perfect is to change often." – Winston Churchill

# SAVE THE DATE!

Visit with Santa and Meet His Reindeer!

Saturday  
December 7, 2019  
10:00 am-12:00 pm



## South Metro Federal Credit Union members: Switch to Sprint and Save.

You get \$200 in cash rewards on up to 2 lines when you switch to Sprint. Plus, lines 3, 4 and 5 are free! That means savings of more than \$800 over Verizon in your first year. With Sprint's 100% satisfaction guarantee for the first 30 days, you can be certain that you'll love your plan or get your money back.

### Claiming your cash rewards is easy as apple pie:

- ▶ **Open a new Sprint account and mention that you're a credit union member.**
- ▶ **Register your new lines at [LoveMyCreditUnion.org/Fall19](http://LoveMyCreditUnion.org/Fall19)**
- ▶ **Cash rewards will be deposited directly into your credit union account within six to eight weeks.**

**Don't miss out on hundreds in savings. Switch to Sprint and claim your rewards today!**

Visit [LoveMyCreditUnion.com/Fall19](http://LoveMyCreditUnion.com/Fall19) to learn more.

Cash Reward: Via deposit. \$100 per line, max 2 lines. Req. qualifying plan and registration within 30 days of activation. Loyalty Reward: Via deposit per account. Basic: After 9/30/20 pay \$60 a month for line 1, \$40 a month for line 2 and \$20 a month per line for lines 3 thru 5, with AutoPay. Offer/coverage not available everywhere. Requires new lines of service. Subject to credit & \$30 activation fee. Excludes taxes, fees, and roaming. Speed maximums, use rules and restrictions apply. Unlimited Basic compared to Verizon Start Unlimited for 5 lines, features differ.



## QUESTIONS?

Contact Us

**South Metro**  
FEDERAL CREDIT UNION

Visit [www.SouthMet.com](http://www.SouthMet.com)  
Call 952-445-0888  
Email [MemberServices@SouthMet.com](mailto:MemberServices@SouthMet.com)

ESI

NCUA

EQUAL HOUSING LENDER